

Product information

Concerning: R82 Kudu



R82 and Dahl collaboration

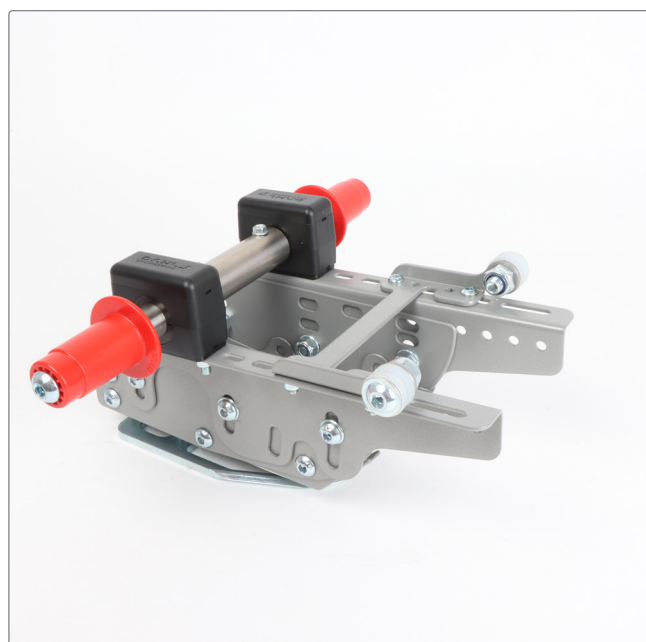
The R82 Kudu can now be combined with Dahl MADSTM, the Multi Adjustable Docking System from the Danish manufacturer Dahl, for easy and safe installation of the Kudu for transporting children in motor vehicles.

It is a patented docking adaptation system available from Dahl Engineering which can be used with a Kudu without any adaptations needed.

The docking system consists of a light-weight sub-frame which is adjustable in height, inclination, and length.

By means of brackets fastened to the wheelchair frame and a simple and effective locking system, the sub-frame can quickly be attached and removed without any tools and stowed away when not in use.

The MADSTM adaptation kits are tailor-made for the specific wheelchair make and model and are tested together according to ISO 7176-19:2022.



R82 A/S

+45 79 68 58 88

R82@etac.com

www.etac.com

etac[®]
Creating Possibilities