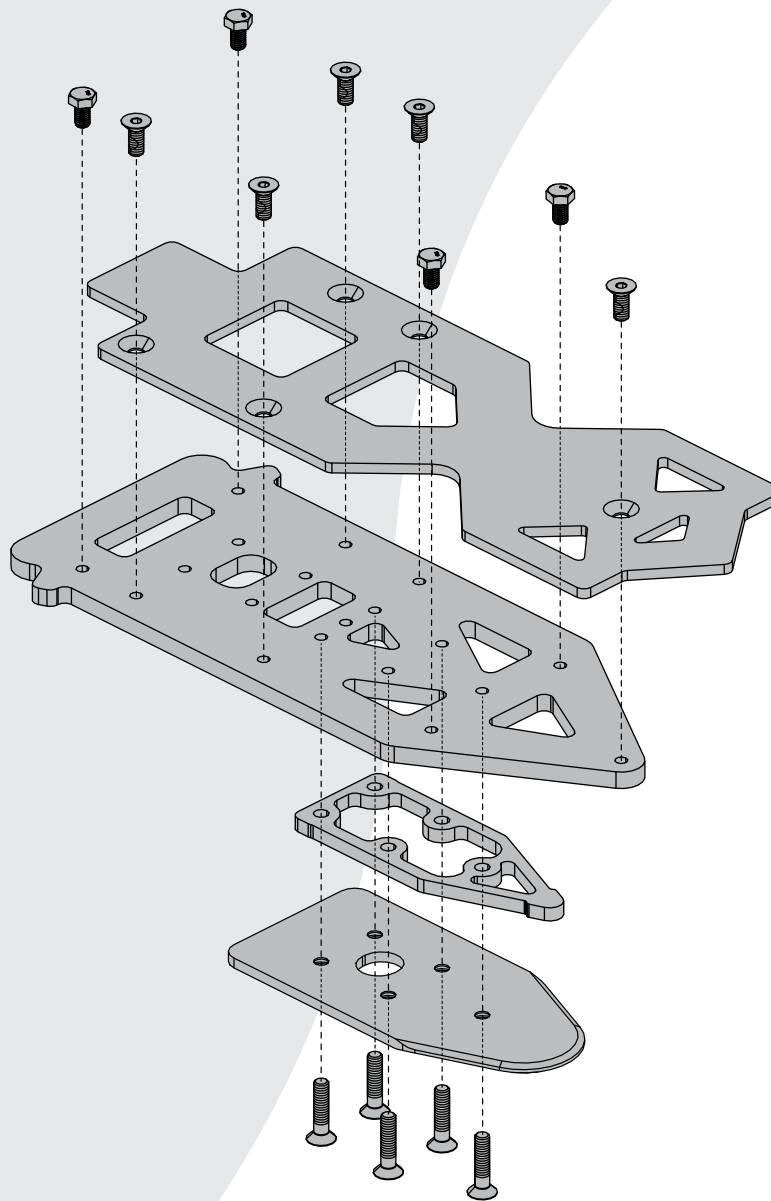


# *DAHL Docking Station*

## *Q6 Edge 3 Stretto*

### *Installation and User Instructions*



I N F I N F B 4 7 6 7

INFINFB4767, Rev A, May 2026

**PRIDE**<sup>®</sup>  
MOBILITY  
LIVE YOUR BEST<sup>®</sup>

**BAJA**<sup>®</sup> MOBILITY

**Q**  
QUANTUM<sup>®</sup>  
#1 FOR REHAB POWER

The purpose of these instructions is to guide providers/technicians through the steps of securing the DAHL Engineering Docking System Lock Plate to the Quantum® Q6 Edge 3 Stretto power base and to instruct end users how to operate the DAHL Engineering Docking System. These instructions must be utilized for both the DAHL Engineering MKII Docking System and the DAHL Engineering VarioDock Docking System.

**There are two sections to these instructions:**

**Section 1:** Details the installation instructions for the DAHL Engineering Docking System Lock Plate. These instructions do not apply to the installation of DAHL Engineering Docking Systems into vehicles. Pride® Mobility Products and Quantum® Rehab will not administer any sales, support or installation of DAHL Engineering Docking Systems into vehicles. DAHL Engineering will distribute the installation kit for DAHL Engineering Docking Systems (including any replacement or auxiliary parts) to Wheelchair Adapted Vehicle (WAV) conversion workshops, who will be directly responsible for installing DAHL Engineering Docking Systems into vehicles according to instructions issued by DAHL Engineering.

**Section 2:** Instructs the end user how to properly operate the DAHL Engineering Docking System. These instructions have been provided by DAHL and can be found at <https://dahleengineering.dk/>. Inclusion of these instructions to this document are not an endorsement of this product.

If you have questions or concerns about the installation of a DAHL Engineering Docking System into a vehicle, use, or maintenance, please contact DAHL Engineering directly or visit DAHL Engineering’s website (<https://dahleengineering.dk/>) for additional information.

The Q6 Edge 3 Stretto power wheelchairs have been successfully tested in accordance with the standards of ISO 7176-19 (“Wheeled mobility devices for use as seats in motor vehicles”); however, improper installation of Lock Plates may void the Q6 Edge 3 Stretto warranty and cause serious injury, death and/or property damage.

Following the installation instructions and warnings assures the CE-marking of the wheelchair is maintained.

**Table of Contents**

<b>Kit Contents</b> .....	3	Operation	
<b>Tools / Material Requirements</b> .....	3	Perform a check .....	14
<b>Section 1:</b>		Securing the wheelchair .....	15
Warnings .....	4	Release from the docking station .....	15 - 16
Chair Preparations.....	5 - 6	Safety Belts .....	16
Assembly Instructions.....	7 - 12	Cleaning the belts.....	16
<b>Section 2:</b>		General occupant restraint instructions .....	17 - 18
Warnings .....	13		

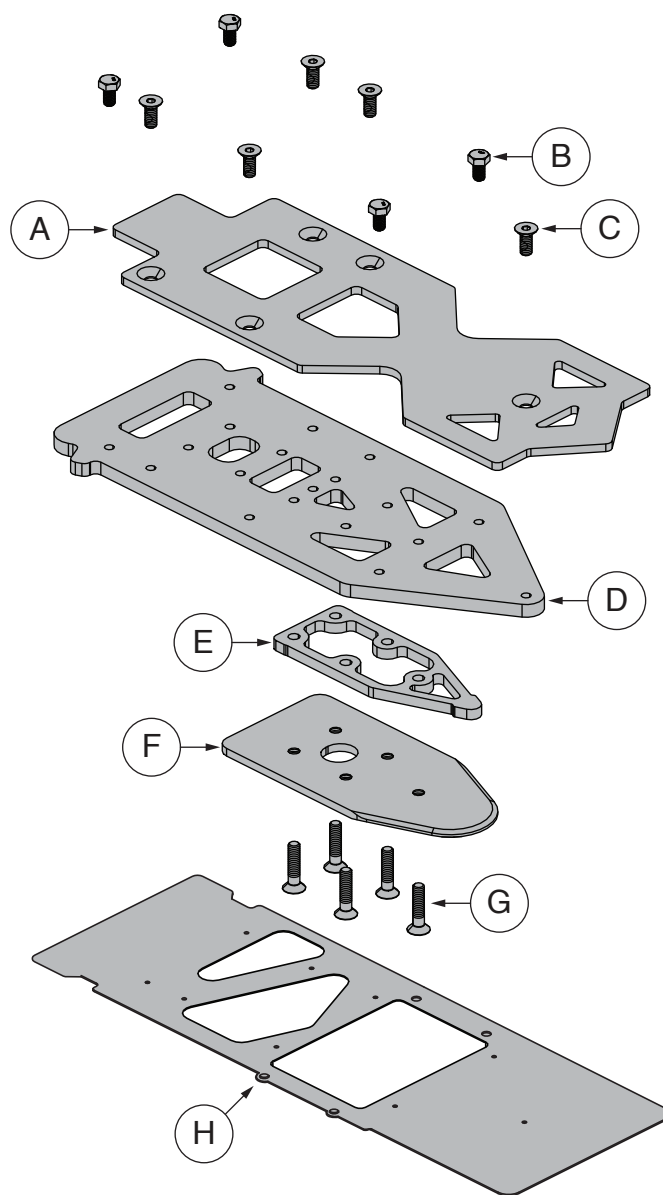
## DAHL Docking Systems Lock Plate Kit Contents (provided by DAHL Engineering):

Ref. Ltr.	Description	Qty.
A	Steel Spacer Plate	1
B	(DAHL #502634) SCREW, HEX HEAD, M8 X 1.25 X 15, ISO 4017, CL 12.9, BZ	4
C	(DAHL #502859) SCREW, FLAT HEAD, M8 X 1.25 X 20, ISO 10642 CL 12.9, BZ	5
D	Adapter Plate	1
E	Locking Plate Spacer	1
F	Locking Plate	1
G	(DAHL #502800) SCREW, 8 x 35 mm, CLASS 14.9, Torx 27	5
H	(DAHL 503014) Drilling Template	1
n/a	*Dahl # 501750 or # 503600	1




Part # 502362 for the adaptation kit **MUST** be ordered from DAHL Engineering. This will include Reference Letters A, B, C, D and H. The new hardware is provided with the Installation. The screws supplied with the Dahl kit #502362 must always be installed and cannot be replaced by any other standard screws. Please contact and request new original hardware directly from DAHL as required.

DAHL fixed height docking station Mk2 #501750 and the power height adjustable Dahl VarioDock™ #503600 not shown. Visit DAHL Engineering's website at <https://dahleengineering.dk> for additional information.



## Tools / Material Requirements per DAHL Engineering (not provided):

- Safety Glasses
- 5 mm Metric Hex Key
- Calibrated Torque Wrench
- 13 mm Socket
- T27 Torx Bit
- Clamps
- Center Punch
- Power Grinder
- Hacksaw
- Loctite 262 (or equivalent)
- Cutting Oil
- File
- Power Drill
- Drill Bits

**TIP:** When the camera icon is present, take a few pictures before proceeding. These pictures can be used as a reference for reassembly. 



**WARNING!** Failure to follow these instructions may result in serious injury or death to the power chair user or others passengers in the vehicle, and/or cause property damage.



**WARNING!** Lock Plates should only be installed by an authorized provider/technician. End users should not attempt to install Lock Plates.



**WARNING!** The Q6 Edge 3 Stretto power base must be unoccupied during removal and installation of Lock Plates.



**WARNING!** The new hardware provided with the Lock Plate kit must be used for installation.



**WARNING!** The maximum user weight for the Q6 Edge 3 Stretto with any DAHL Engineering Docking System is 136 kg / 300 lbs.



**WARNING!** Keep hands clear of all pinch points during installation and removal of Lock Plates.

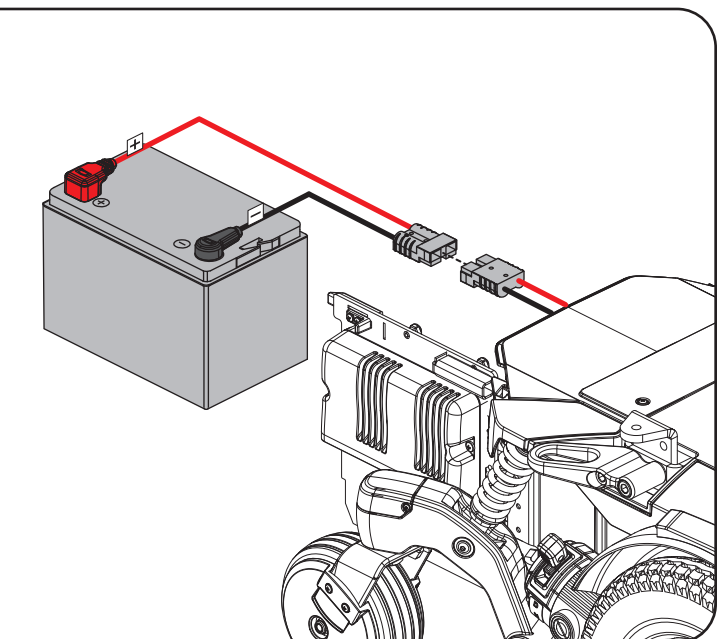
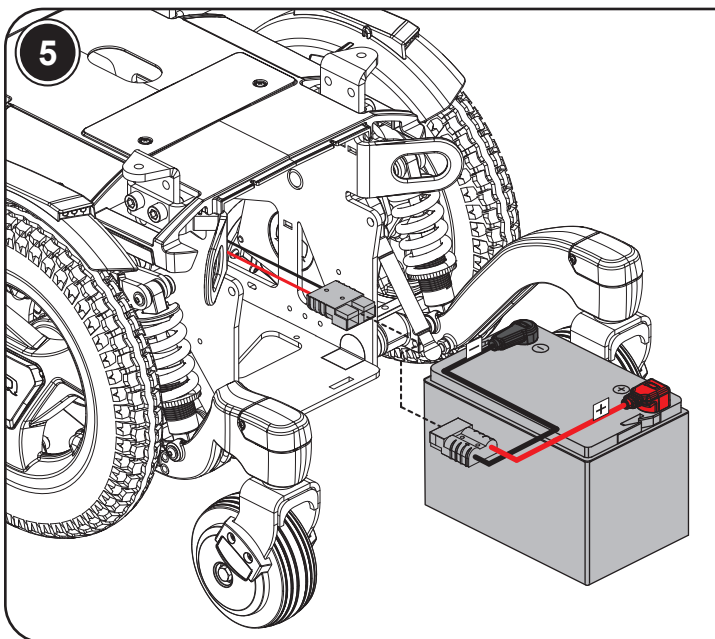
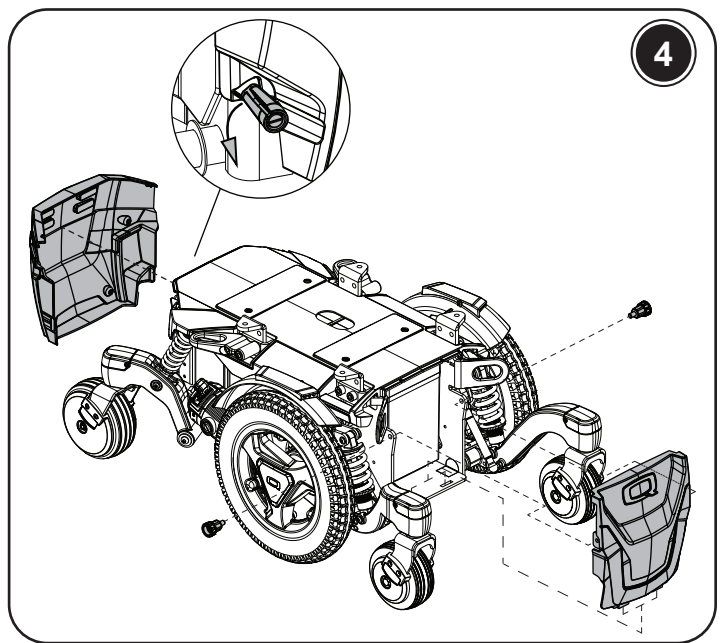
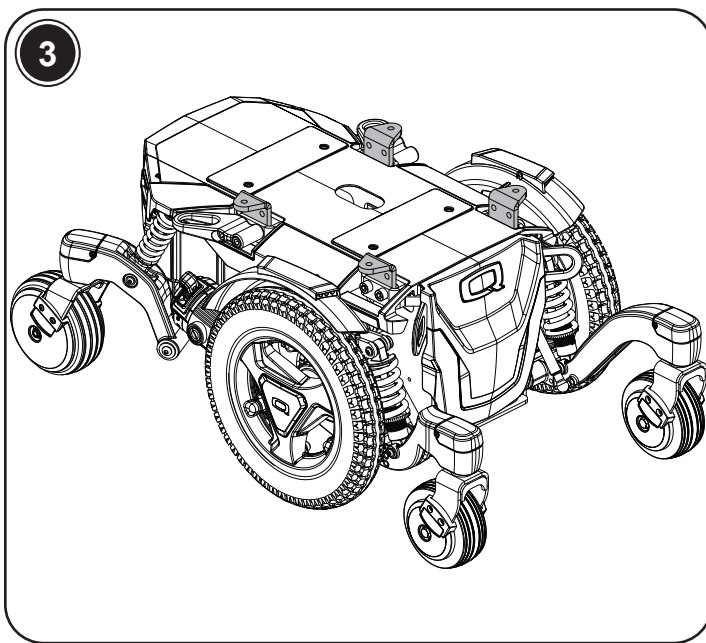


**WARNING!** It is recommended that a second individual assist in the stabilization and removal of the seating system from the power chair base.



**WARNING!** The new hardware provided with the kit **MUST** be used for installation.

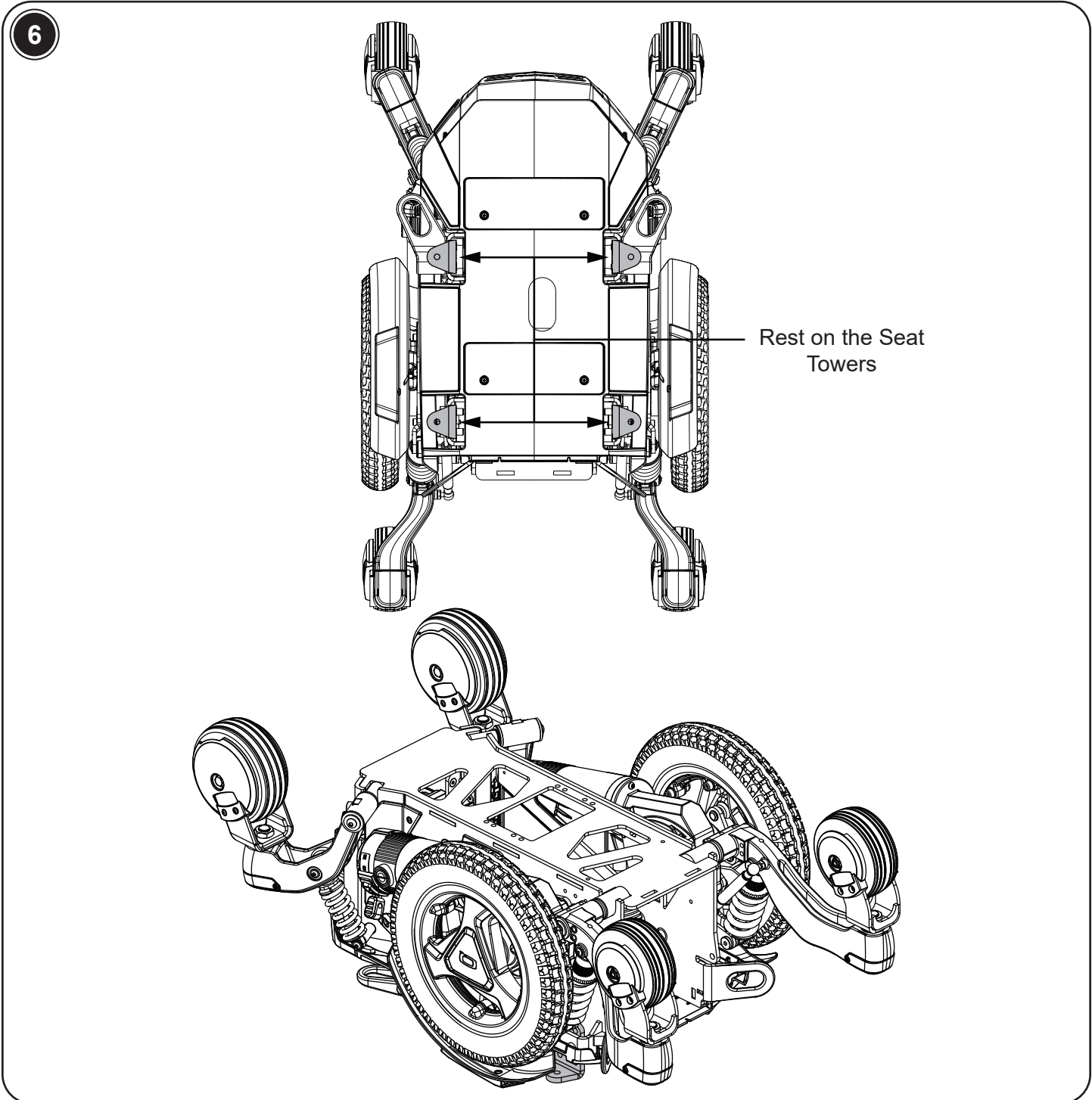
- 1 Ensure the unit is in drive mode. Reference the power chair Owner's Manual.
- 2 Turn off power at the joystick. Reference the power chair Owner's Manual.
- 3 Disconnect any cables between the power base and seating system, then remove the seating system, leaving the seat towers on the unit. 📷
- 4 Remove the front and rear plastic battery doors from the power base.
- 5 Remove the batteries, then disconnect them from the power harness. Reference the power chair Owner's Manual.



- 6 Flip the power base over so it rests on the seat towers. If the seat towers are set to the lowest position, use blocks under the seat towers to raise the power base so the fenders do not touch the ground.

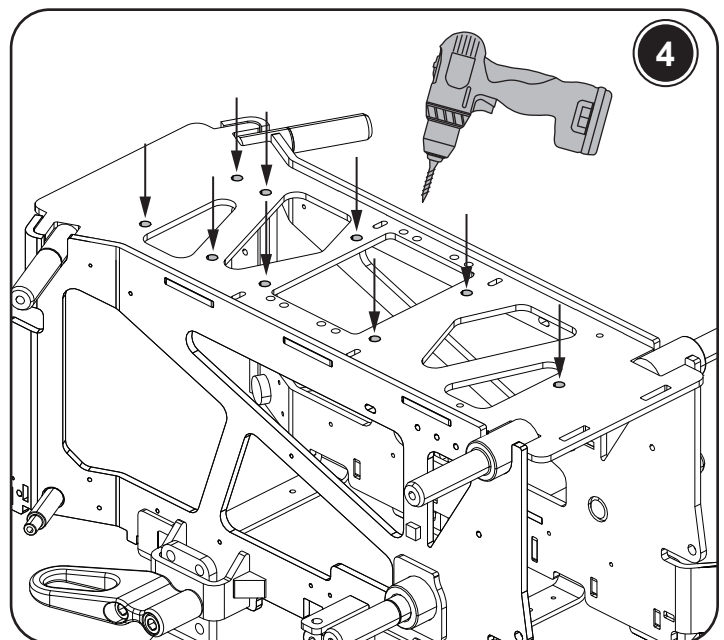
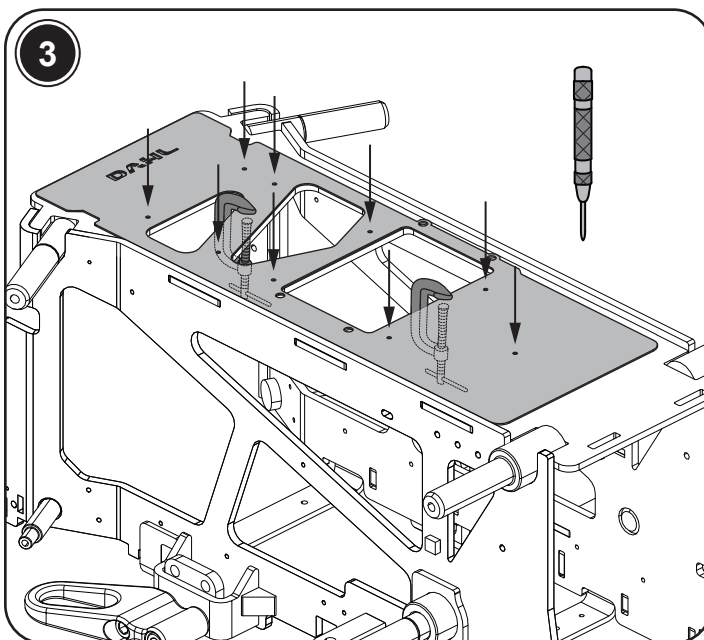
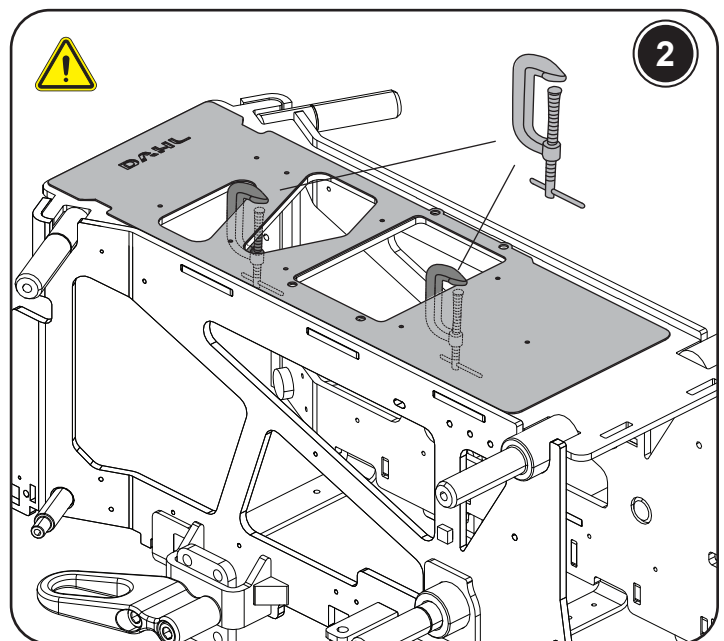
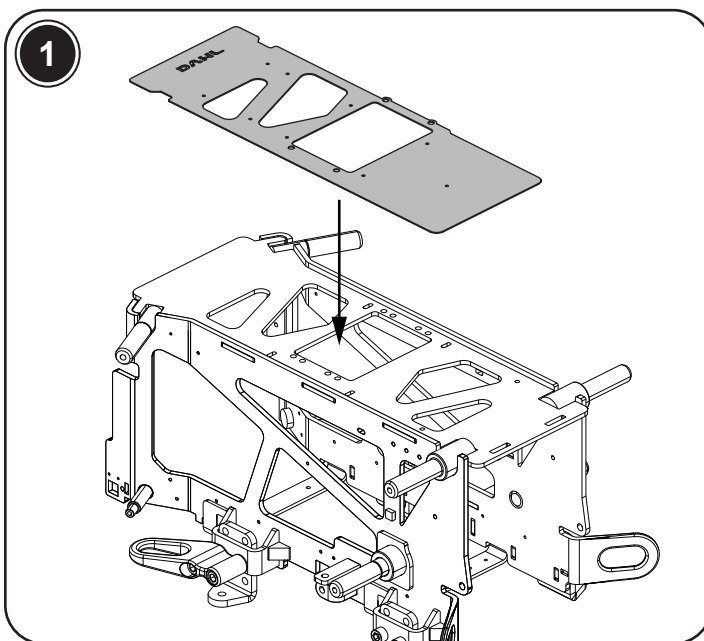


**Important:** Take care to not damage the fenders or shrouds when flipping the power base over.



**Note:** Only the main frame and kit components will be shown in the rest of the instruction. The power base should remain assembled as shown.

- 1 Align the drilling template (H) with the bottom of the main frame, ensuring the template is facing upwards and the cutouts match the pattern on the bottom of the main frame.
  - 2 Once aligned, clamp the template to the bottom of the main frame so it cannot move.
- ⚠ Important: Ensure the template is properly aligned and secured before proceeding. Misalignment will prevent the docking station from mounting correctly.**
- 3 Use a center punch to mark the locations for drilling holes in the bottom of the main frame, then remove the template.
  - 4 Using a 3 mm drill bit, drill nine starter holes into the main frame using the marks as a guide, applying oil to the marks before drilling. Gradually widen the holes to 4.5 mm, then to 6.5 mm, and finally to 8.5 mm, applying oil during each step. Clean the metal shavings after drilling.

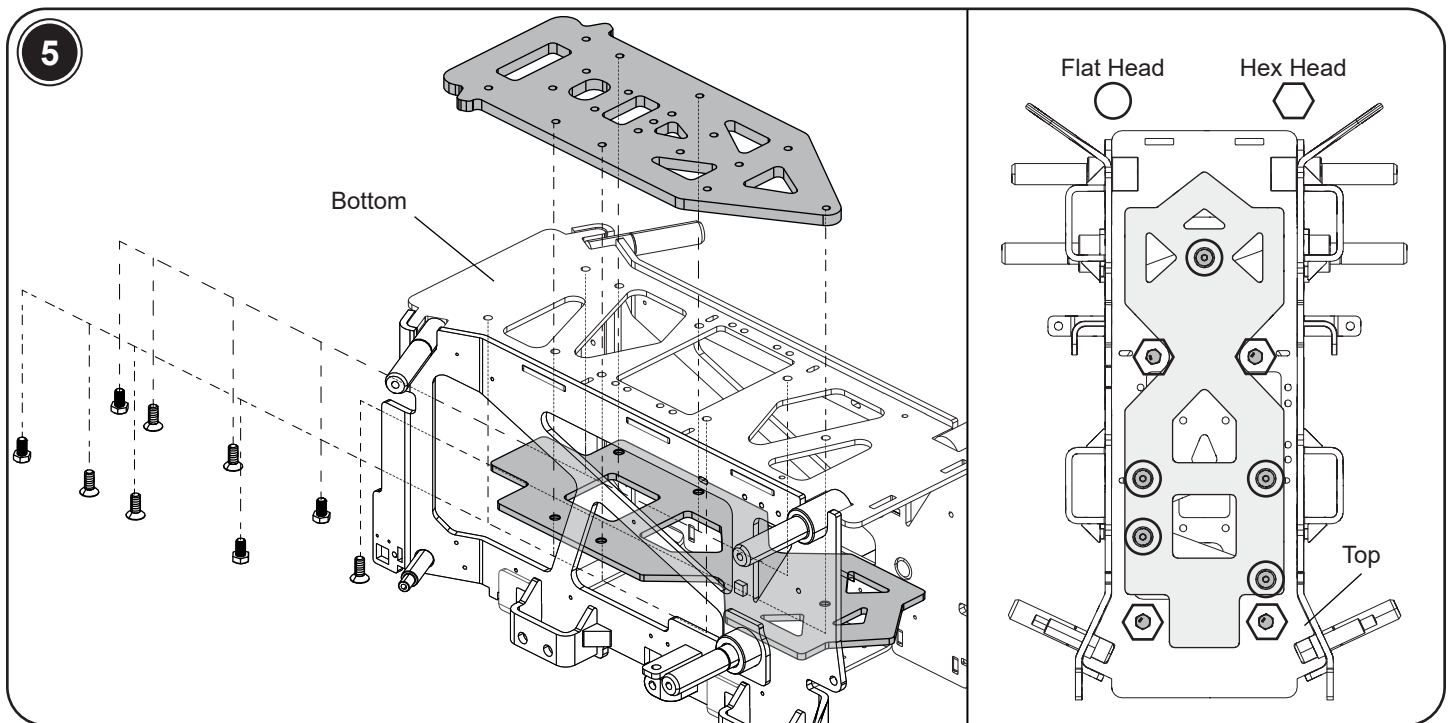


- 5 Align the adapter plate (D) and steel spacer plate (A) onto the main frame as shown, ensuring the holes are correctly oriented.

Using the four M8 x 15 mm hex head screws (B) and five M8 x 20 mm flat head screws (C), temporarily install the adapter plate and steel spacer plate onto the main frame, hand-tightening the screws so they pass through the main frame and the plates.

If the assembly does not align with all nine holes, remove the assembly and enlarge the misaligned holes to 9 mm, ensuring they do not exceed 9 mm. Repeat until the adapter plate securely mounts to the main frame.

**Note:** The flat head screws (C) mount through the top of the spacer plate. The hex head screws (B) mount through the top of the main frame.



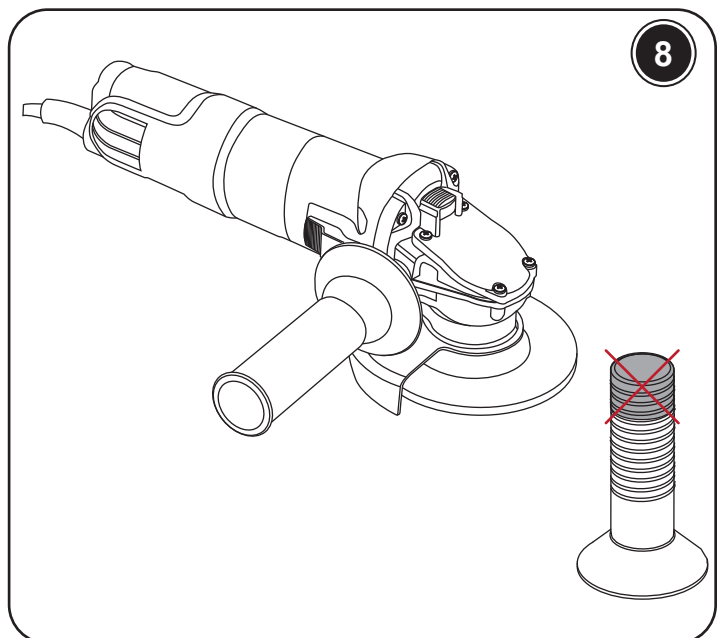
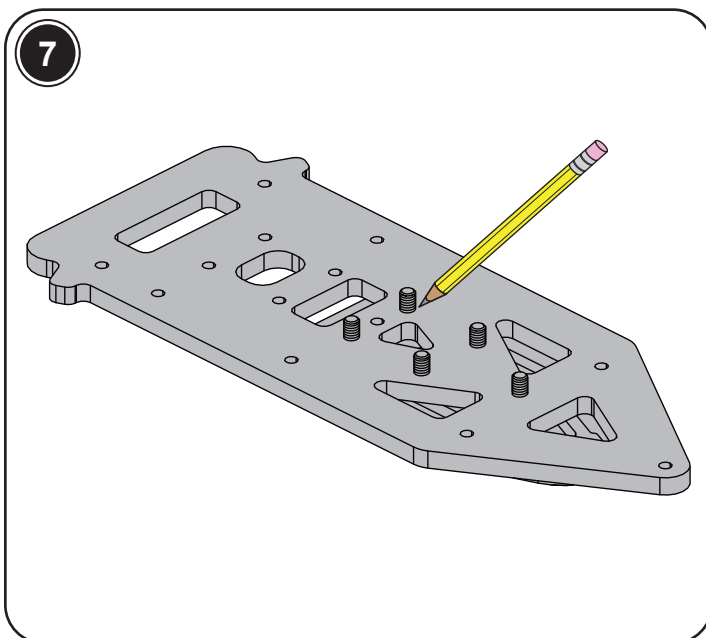
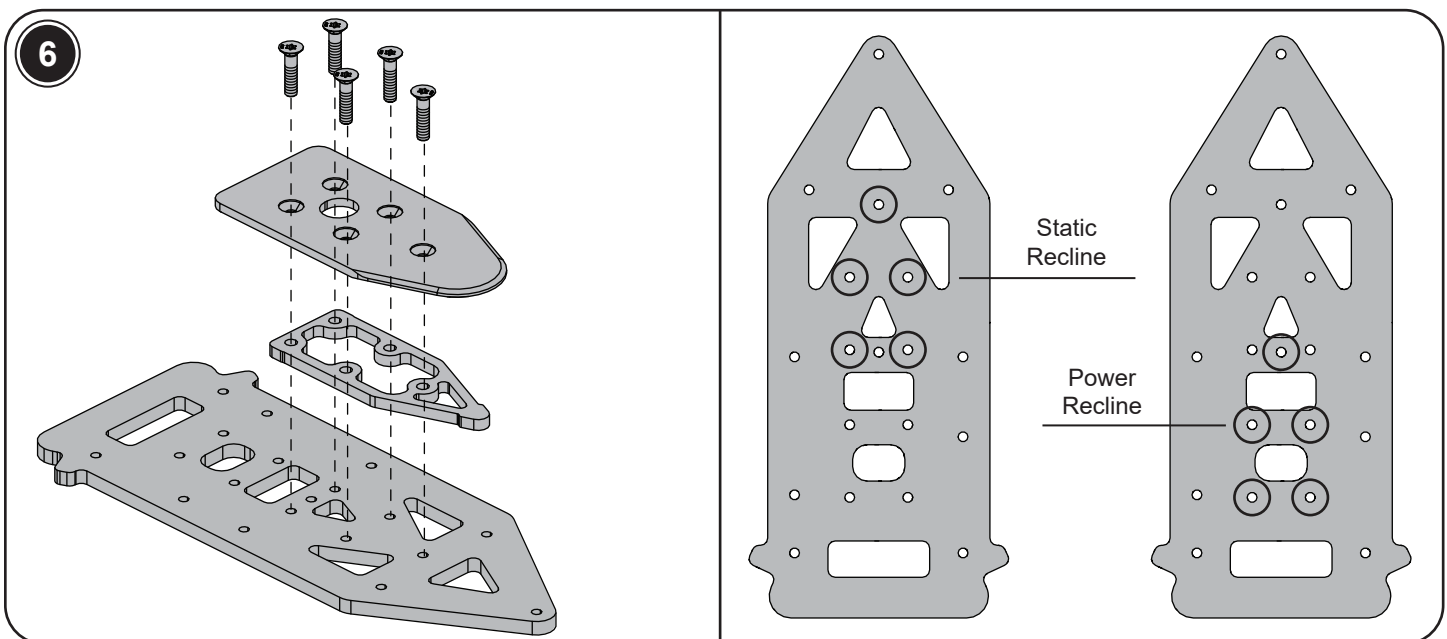
- 6** Remove the adapter plate (D) from the main frame then assemble the Docking System as shown using the five 35 mm Torx screws (G), adapter plate (D), locking plate (F), and spacer (E).

**IMPORTANT:** The mounting location depends on the seating system.

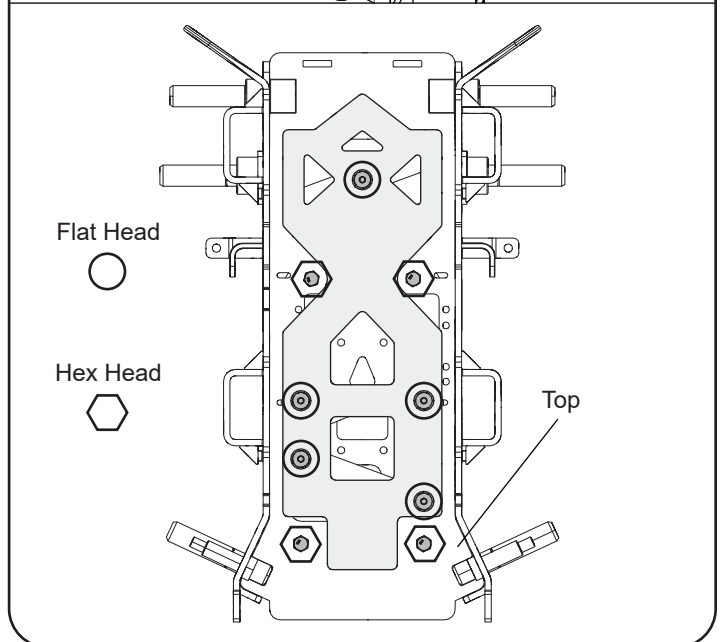
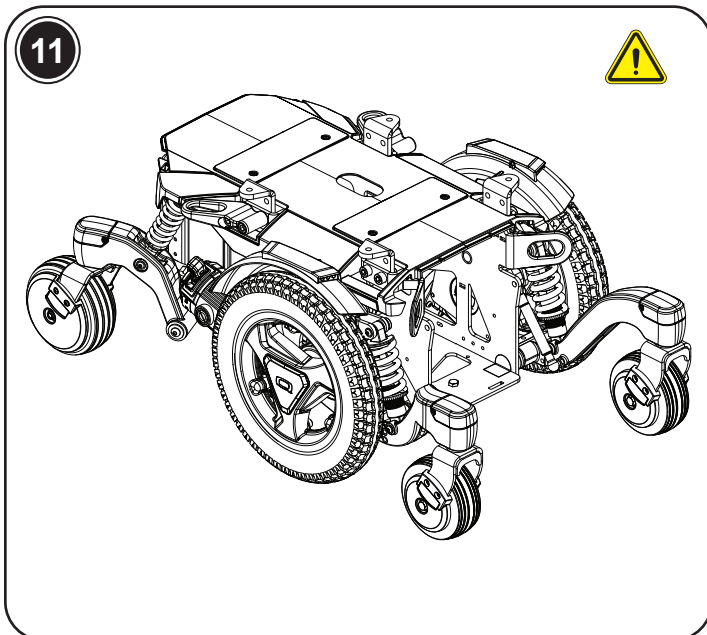
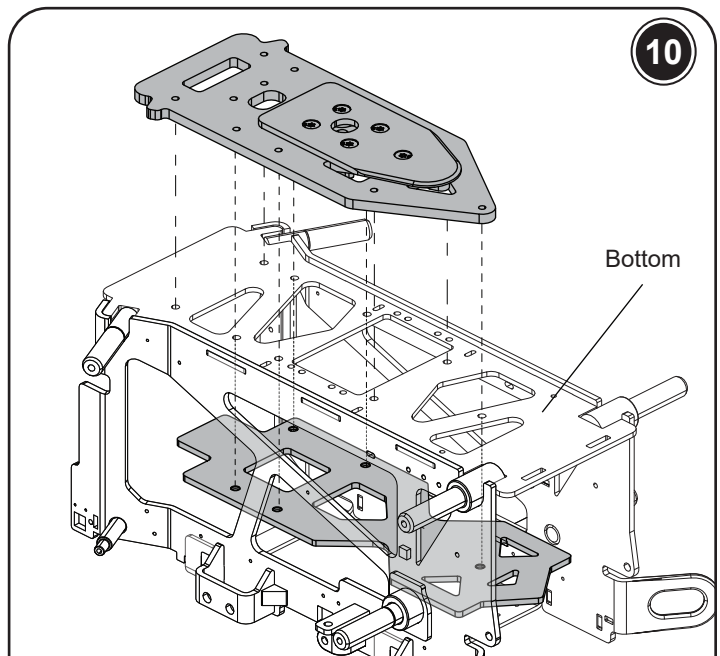
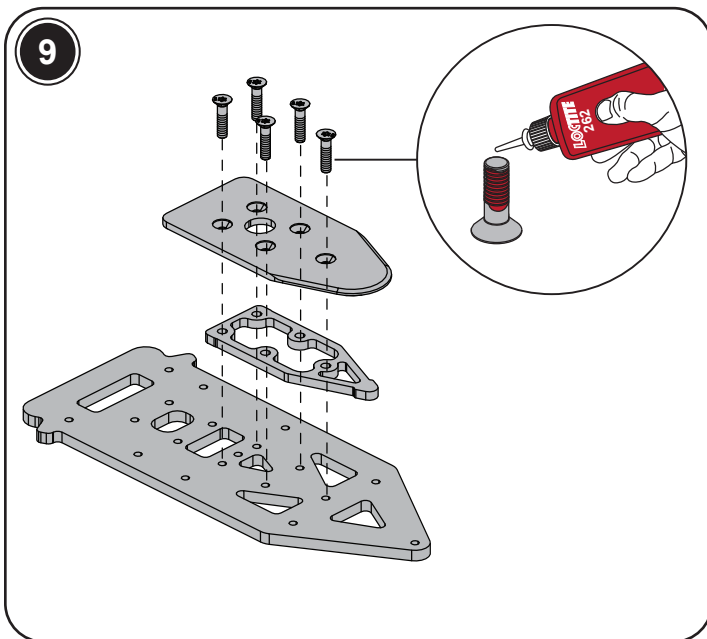
- 1.) For static recline, use the five holes towards the front of the adapter plate (D).
- 2.) For power recline, use the five holes towards the rear of the adapter plate (D).

- 7** Turn the assembly Docking System over. Flush mark the Torx screws (G) protruding through the adapter plate to the top of the plate.

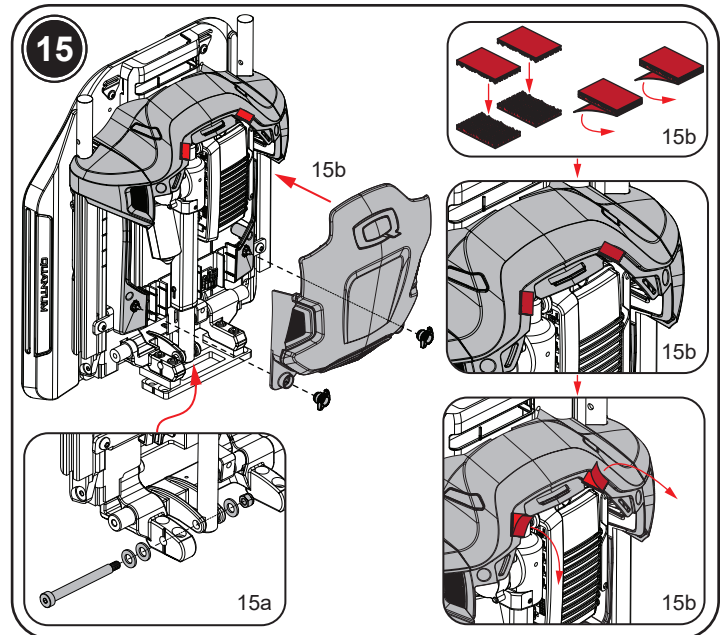
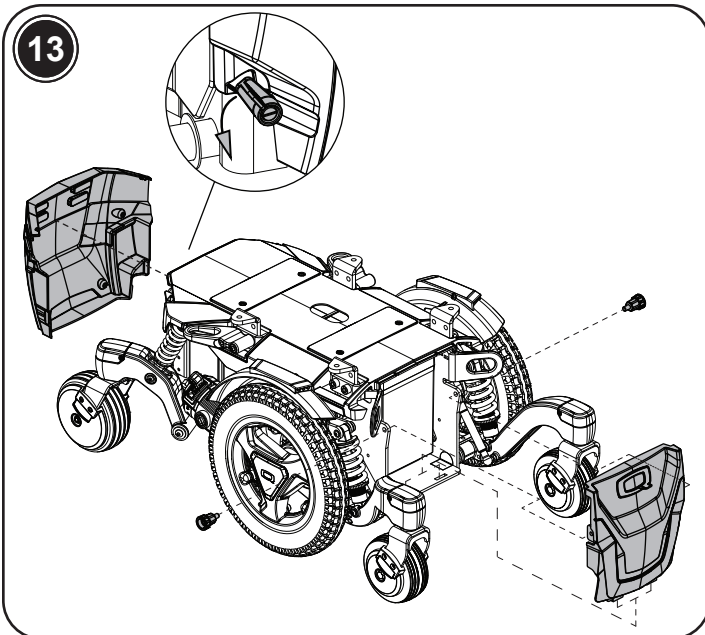
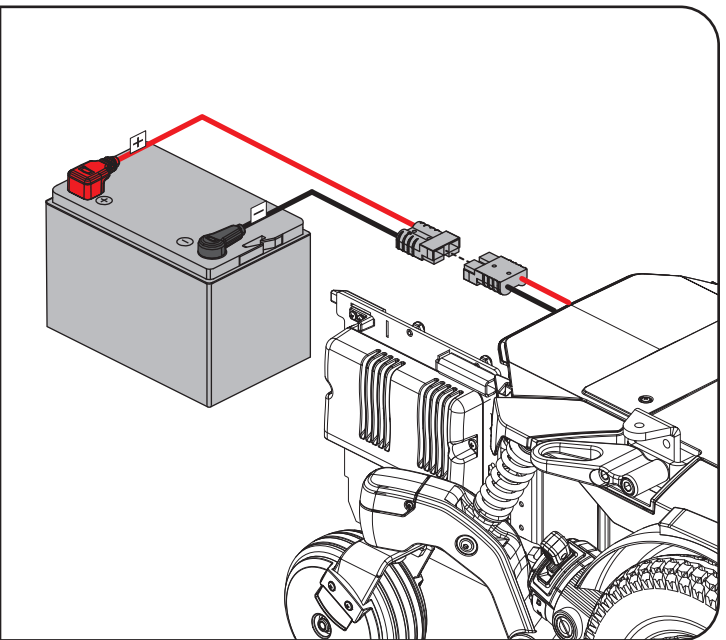
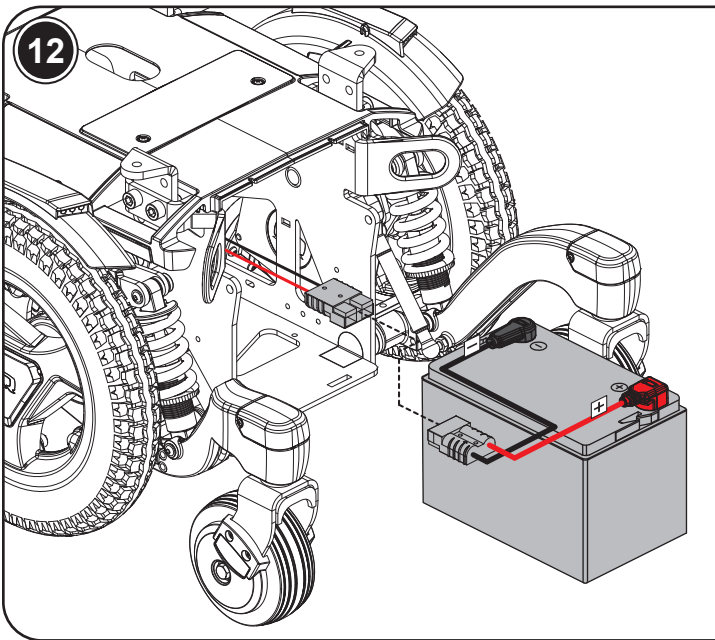
- 8** Disassemble the Docking System and cut the marked screws with a grinder or hacksaw. Use a file to smooth out any rough edges on the cut end of the screws.



- 9** Reassemble the Docking System, ensuring the adapter plate is oriented as in step 5, and the cut Torx screws (G) are set flush within the locking plate spacer (E) and locking plate (F) when reinstalled. **Apply Loctite 262 or equivalent to the screw threads and torque to 16 - 18 N • m.**
  - 10** Secure the assembled Docking Station and steel spacer plate (D) to the main frame using the four M8 x 15 mm hex head screws (B) and five M8 x 20 mm flat head screws (C). **Apply Loctite 262 or equivalent to the screw threads and torque to 20 - 25 N • m.**
  - 11** Flip the unit back over and onto the wheels.
- !** **Important: Take care to not damage the fenders or the center shroud when flipping the power base over.**



- 12** Reinstall the batteries, ensuring the positive terminals are facing towards the outside of the unit.
- 13** Reinstall the front and rear plastic doors.
- 14** Reinstall the seating system and any other components removed during assembly.
- 15** **Final back preparation:**
  - a. Retrieve (1) HDW2402871, (3) WASMETR1031, and (1) NUTNYLK1011 from KIT2602621. Replace the hardware securing the lower end of the recline actuator with this hardware as shown below. **Torque the screw to 18 - 22 N·m** during installation. **IMPORTANT:** Support the seat back at all times when removing or installing the actuator mounting hardware. Once the hardware is removed, the seat back is no longer secured and will move freely.
  - b. Retrieve (4) DGN2600640 from KIT2602621. Pair the segments and press the interlocking surfaces together to create two assemblies. Remove the adhesive backing from one side of each assembly, then install one assembly on the left side and one on the right side of the recessed lip of the e-box. Remove the remaining adhesive backing from each assembly, then reinstall the rear shroud to ensure proper alignment. Apply firm pressure after installation and allow the assembly to remain undisturbed for a minimum of 5 minutes to achieve proper adhesion.



**Sticker identifying wheelchairs with Dahl Docking locking plate installed**

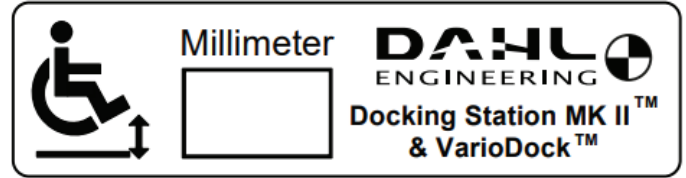
The value noted on the sticker expresses the wheelchair's ground clearance (minus 1-2 mm). For the power height adjustable VarioDock™ this is the height that the display must be set to. For the MK II this is the final height that the docking unit must be installed at. Failure to set/install the docking unit to the correct height might impede the locking plate from sliding smoothly into the docking unit or prevent the Docking station and wheelchair from connecting altogether.

The installer of the locking plate must measure the ground clearance after installation with the user seated in the wheelchair and note the final height on the sticker. Make sure that the wheels are inflated to the correct tire pressure.

Attach the sticker to a location that is readily visible to a driver or an assistant.

Please also refer to the Dahl Docking Station Mk II and VARIODOCK user and installation instructions for further details.

<https://dahleengineering.dk/en/products/dahl-docking-systems/approved-wheelchairs-and-manuals/>



These warnings are from the DAHL User Manual located at:  
<https://dahleengineering.dk/>

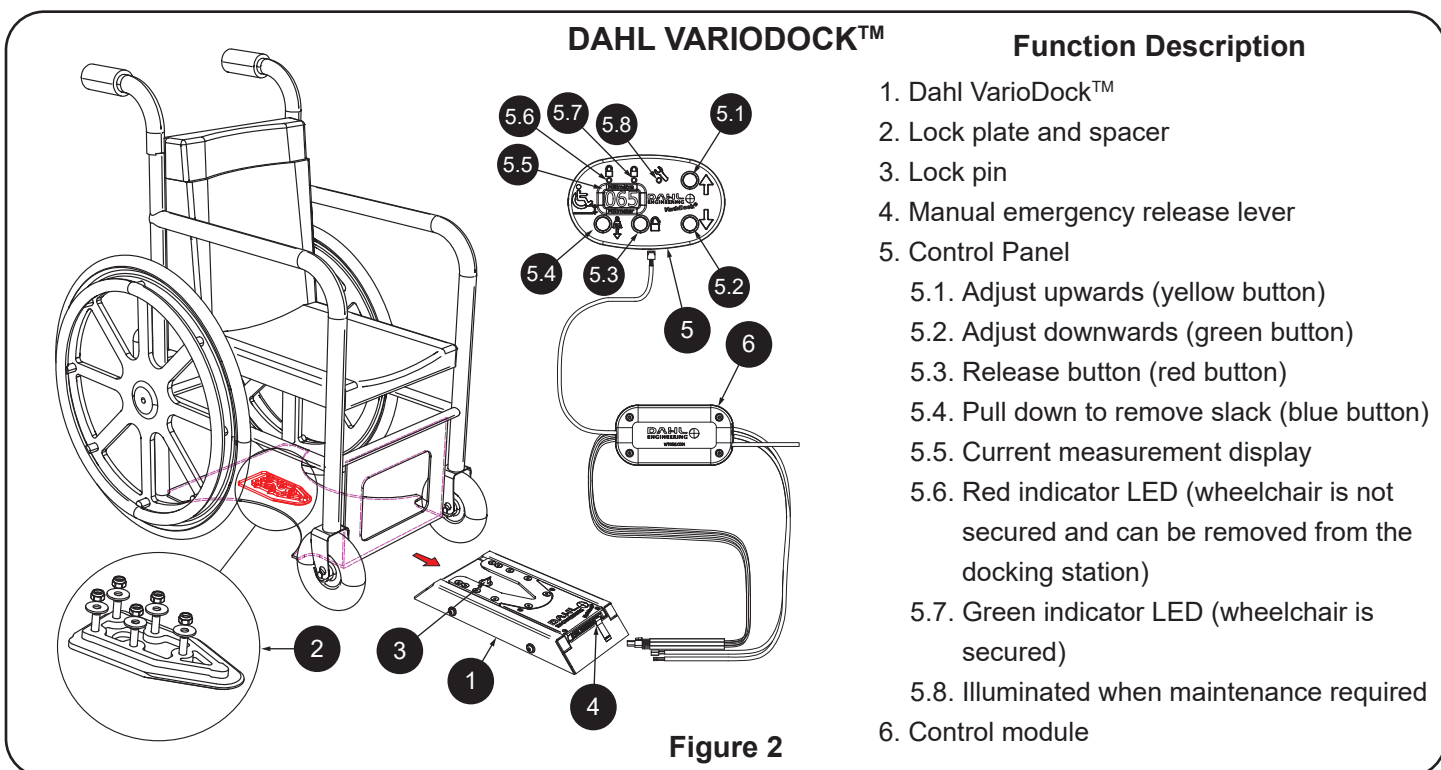
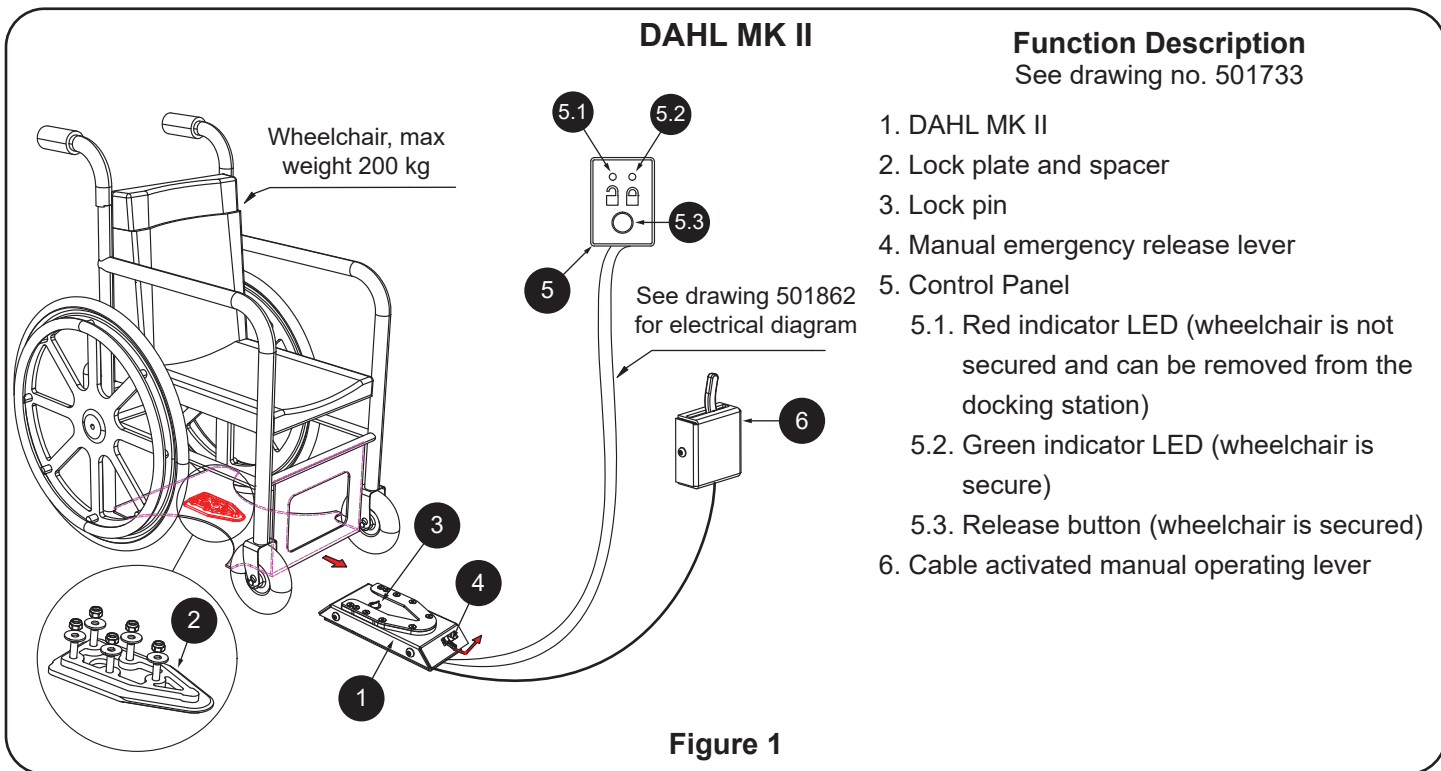
### **WARNINGS! For Operation of the Docking System (From DAHL's User Manual)**

- Never begin driving the vehicle whilst a wheelchair is being docked in the docking station or if the user's safety belt is not secured.
- Never begin driving the vehicle if the warning tone sounds and/or the red warning lamp (LED) in the control panel flashes or lights up.
- WTORS may only be used for forward-facing wheelchairs.
- Contact DAHL Engineering or your dealer immediately if there is any doubt concerning the use of the product or if the product has faults or non-conformities.
- Users in wheelchairs should never be transported in the vehicle if certified WTORS are not used.
- The user should not be a passenger or driver of the vehicle if both lap belts and shoulder belts are not used. This is to reduce the risk of the user's head or chest hitting interior vehicle elements and other passengers.
- The docking system, seat belts and components shall be subjected to a check and maintenance inspection at least once a year in accordance with maintenance interval and documentation.
- The user should never try to repair, adjust, or modify the docking station's/WTORS components. Alterations and modifications to the system or replacement with non-original DAHL components are not recommended. If there are questions concerning this matter and the installation of the docking station in the vehicle, it is recommended that DAHL Engineering be contacted for more advice. Any alterations carried out without prior agreement with DAHL Engineering are entirely the responsibility of the fitter and/or the user.
- Do not attach components to weak/non-solid components or materials.
- The fitter is responsible for ensuring that the installed unit satisfies all statutory requirements. Contact local/national authorities if there is any doubt in this regard.
- Incorrect installation of safety belts and the docking station can cause malfunctions which can result in death or serious injury to the user.
- Belt webbing must be protected against contact with sharp edges and corners, contact with solvents, polishing agents, oil and caustic/corrosive fluids or materials (in particular battery acid). Damaged, worn, teared or contaminated belt webbing and components must be replaced. This should be checked daily.
- An airbag should be deactivated if the user is situated less than 300 mm from the airbag, or as recommended by the vehicle manufacturer. An airbag should also be deactivated, if retrofitted parts block or have an effect on its inflation/expansion. If it is necessary to deactivate or dismount the airbag, one shall, before fitting the docking system, check if the vehicle manufacturer can offer a safety belt, which is approved to be fitted without an airbag.
- A docking station which has been involved in a collision from which the vehicle has had to be towed away, must be sent to DAHL Engineering for inspection and possible repair. Safety belts and components must be replaced, without separating the components, because they can have obtained invisible damages.
- In the event that the instructions and warnings in this guide are not followed, there is a risk of death or serious injury to the wheelchair user and the other passengers in the vehicle.
- It is essential, that wheelchair manufacturers' instructions, references and warnings are followed when installing and using DAHL Docking Systems. The EU medical device directive states that a CE-marked medical device, which has been customized outside the manufacturer's specifications, thereby become a customized medical device and that the CE-marking must be removed. Anyone who customizes a CE-marked medical device outside the manufacturers specifications is responsible for quality, safety and performance of the device and becomes the responsible manufacturer of the customized device. Complying with the wheelchair manufacturers user and installation guide when installing the DAHL Docking System will ensure that the wheelchair manufacturers CE-marking will remain intact. Manufacturers manuals for all CE-marked wheelchairs can be downloaded from our homepage.

These instructions are from the DAHL User Manual located at:  
<https://dahleengineering.dk/>

**Perform a check of the wheelchair**

- 1** Perform a final check by connection the wheelchair to the docking station. Check that it is securely locked and make sure that all release methods work as intended (see Figure 1 and 2).



These instructions are from the DAHL User Manual located at:  
<https://dahleengineering.dk/>

### Securing the wheelchair in the MK II and VarioDock™ docking stations

- Maneuver the wheelchair slowly and in a uniform direction over the docking station. The lock plate (2) positioned under the wheelchair helps to guide the wheelchair into place in the docking station. When the locking plate is fully engaged in the docking station, a spring-action locking pin (3) automatically secures the lock plate;
- The Dahl docking stations are equipped with a control switch that indicates whether the lock plate is correctly secured in the docking station. As soon as the lock plate comes into contact with the locking pin (3), a warning tone will sound (a high-pitched howl), and the red diode/lamp/LED, in the control panel, MK II (5.1) and VarioDock™ (5.6), will light up until the lock plate is either fully engaged or else the wheelchair is removed from the docking station;
- As an indication that the wheelchair is fully entered into the docking unit and properly secured, the warning tone will cease, the red lamp/LED in the control panel will go out and the green lamp/LED will light up, MK II (5.2) and VarioDock™ (5.7) will light up.
- **Please also refer to Dahl Engineering instructions for Installation, Use and Maintenance.**

---

### Release from the docking station

- 1 When the vehicle has stopped, remove the seat belt.
- 2 To unlock, start by driving the wheelchair forward to release pressure on the locking pin and then press the red release button on the control panel. The locking pin is activated/released for approximately 5 or 8 seconds, after which the locking pin is automatically locked/activated again. Do not attempt to reverse out of the docking station until the red LED on the control module has illuminated, indicating the unlock position.
- 3 Move the wheelchair away from the docking station within this 5 to 8 second period.

### Warning!

**Attempting to reverse the wheelchair before the red LED has been illuminated will result in blocking the docking stations lock mechanism which makes it impossible to reverse. If this happens repeat above unlocking procedure.**

### If the locking pin is not released when you press the red button in the control panel:

- 1 In the event of electrical failure, a manual emergency release is located at the front edge of the docking station. Push the red release arm to one side and hold it there while the wheelchair moves away.
- 2 A cable-activated manual operating lever can also be fitted (accessory). The red release arm is also pushed to one side and should be held there whilst the wheelchair moves away.

These instructions are from the DAHL User Manual located at:  
<https://dahleengineering.dk/>

- 3 An emergency release tool in red is delivered with each docking station. This has to be pushed into the docking station, between the lock plate of the wheelchair and the docking station to release the wheelchair.



**The docking station, belts and components should be inspected at least once a year in accordance with the maintenance interval and documentation.**

### **Safety Belts (Accessory for docking station)**

Safety belts must be inspected and cleaned regularly. Replace belts or straps that have faded in the sun, are worn at the edges, have tears or show clear signs of wear. Components that are damaged or worn must also be replaced. Avoid soiling the belts with chemicals, polishing agents, oil or, in particular, battery acid.

### **Cleaning the belts**

Wash by hand with hot water and mild soap. Rinse thoroughly with water and allow to dry in the shade. Do not expose the belts to direct sunlight and never use powerful cleaning agents.

Only moving metal parts that are not in contact with belt webbing should be lubricated with light oil when necessary and if so very carefully. Never lubricate inertia reels or other components that are part of the safety belt. Never let the belt webbing come into contact with oil or grease.

**Please also refer to DAHL Engineering's instructions for installation, use, and maintenance for Docking Station MK II, as well as the installation and user guide for the height adjustable VarioDock system.**

These instructions are from the DAHL User Manual located at:  
<https://dahleengineering.dk/>

### General occupant restraint instructions

#### DANGER!

- Use a 3-point occupant restraint system meeting ISO 7176-19 requirements to secure the occupant.
- Both pelvic and upper torso restraint belts must be used to restrain the occupant to reduce the possibility of head and chest impacts with the vehicle components.
- Occupant restraints should be mounted to the appropriate vehicle pillar.
- Use a suitable positioned headrest when being transported in a wheelchair.
- Occupant restraints should make full contact with the shoulder, chest and pelvic belts should be positioned low on the pelvis near the thigh-abdominal junction (meeting the requirements specified in ISO 7176-19).
- Any wheelchair anchored postural supports (lap straps, lap belts) should not be used or relied on for occupant restraint in a moving vehicle, regardless if labeled ISO 7176-19 or SAE J2249. Use a vehicle anchored and certified occupant restraint system instead.
- Restraint belt webbing must not be twisted when in use.
- Care should be taken when applying the occupant restraint to position the seatbelt buckle so that the release button will not be contacted by wheelchair components while driving or during a crash.
- Belt restraints must not be held away from the body by wheelchair components such as armrests or wheels (see Figure 3).
- The pelvic restraint belt must be worn low across the front of the pelvis so that the angle of the pelvic belt is within the optional or preferred zone of 30° to 75° to the horizontal. A steeper (greater) angle within the preferred zone, 45° to 75° is desirable i.e. closer to, but never exceeding 75° (see Figure 4).
- The upper torso restraint belt must fit over the midpoint of shoulder and across the chest as illustrated (see Figure 4).
- Restraint belts must be adjusted as tightly as possible consistent with user comfort.

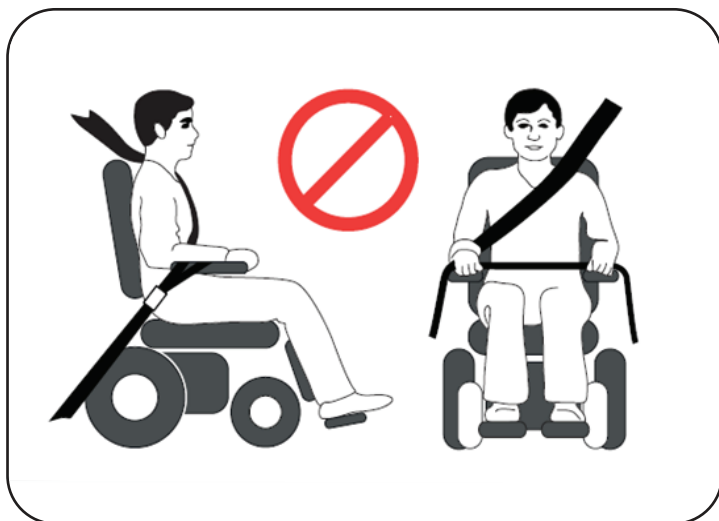


Figure 3

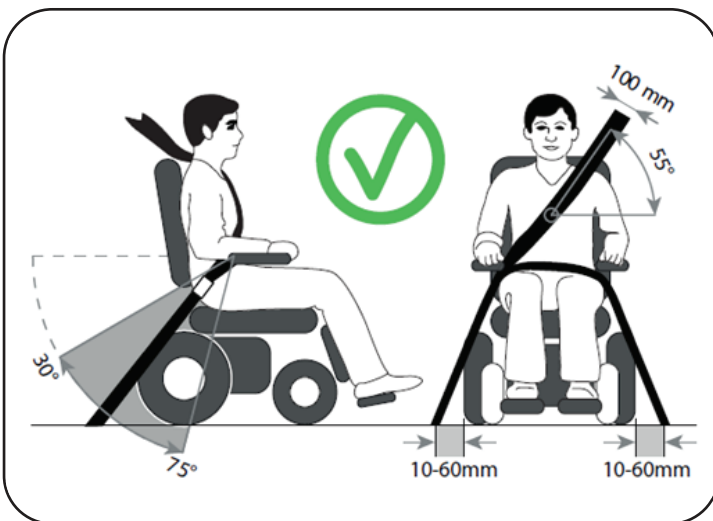


Figure 4

#### For use with DAHL Docking system only

When using a wheelchair with DAHL Docking system, the floor anchorage point for occupant restraint should be located 10-60 mm outside wheels, on each side (see Figure 3 and 4).

These instructions are from the DAHL User Manual located at:  
<https://dahleengineering.dk/>



### **WARNING!**

#### **Do not move the vehicle:**

- Whilst the wheelchair is being maneuvered into position in the docking station;
- If the wheelchair and user are not correctly secured;
- If the warning tone sounds and/or the red warning lamp (LED) in the control panel flashes or it lit!

**Always check if the lock plate is properly engaged in the docking station by trying to reverse the wheelchair out of the docking station before moving the vehicle.**

**It must not be possible to reverse out of the docking station without pressing the red release button in the control panel.**

**Notes:**

### **USA - Quantum Rehab**

401 York Avenue  
Duryea, PA 18642  
[www.quantumrehab.com](http://www.quantumrehab.com)

### **USA - Pride Mobility Products, Corp.**

401 York Avenue  
Duryea, PA 18642  
[www.pridemobility.com](http://www.pridemobility.com)

### **Canada**

5096 South Service Road Beamsville,  
Ontario L3J 1V4  
[www.pridemobility.ca](http://www.pridemobility.ca)  
[www.quantumrehab.ca](http://www.quantumrehab.ca)

### **Australia**

20-24 Apollo Drive  
Hallam, Victoria 3803  
[www.pridemobility.com.au](http://www.pridemobility.com.au)  
[www.quantumrehab.com.au](http://www.quantumrehab.com.au)

### **New Zealand**

391 Neilson Street  
Penrose, Auckland 1061  
[www.pridemobility.co.nz](http://www.pridemobility.co.nz)

### **UK**

*(Authorised UK Representative)*  
32 Wedgwood Road  
Bicester, Oxfordshire OX26 4UL  
[www.pride-mobility.co.uk](http://www.pride-mobility.co.uk)  
[www.quantumrehab.co.uk](http://www.quantumrehab.co.uk)

### **Switzerland**

*(Authorised CH Representative)*  
Gelbart AG  
Tribtschenstrasse 64  
CH-6005 Luzern

### **Netherlands**

*(Authorised EU Representative)*  
De Zwaan 3  
1601 MS Enkhuizen  
[www.pridemobility.eu](http://www.pridemobility.eu)  
[www.quantumrehab.eu](http://www.quantumrehab.eu)

### **Italy**

Via della Tecnica, 3  
00065 - Fiano Romano (RM)  
[www.pride-italia.it](http://www.pride-italia.it)  
[www.quantumrehab-italia.it](http://www.quantumrehab-italia.it)

### **France**

26 Rue Monseigneur Ancel  
69800 Saint-Priest  
[www.pridemobility.fr](http://www.pridemobility.fr)  
[www.quantumrehab.fr](http://www.quantumrehab.fr)

### **Spain**

Calle Las Minas Número 67  
Polígono Industrial Urtinsa II, de  
Alcorcón 28923 Madrid  
[www.pridemobility.es](http://www.pridemobility.es)

### **Germany**

Josef-Förster-Straße 6-8  
33161 Hövelhof  
[www.pridemobility.de](http://www.pridemobility.de)  
[www.quantumrehab.de](http://www.quantumrehab.de)

### **China**

Room 508, Building #4  
TianNa Business Zone No. 500  
Jianyun Road Pudong New Area  
Shanghai 201318  
[www.pridechina.cn](http://www.pridechina.cn)