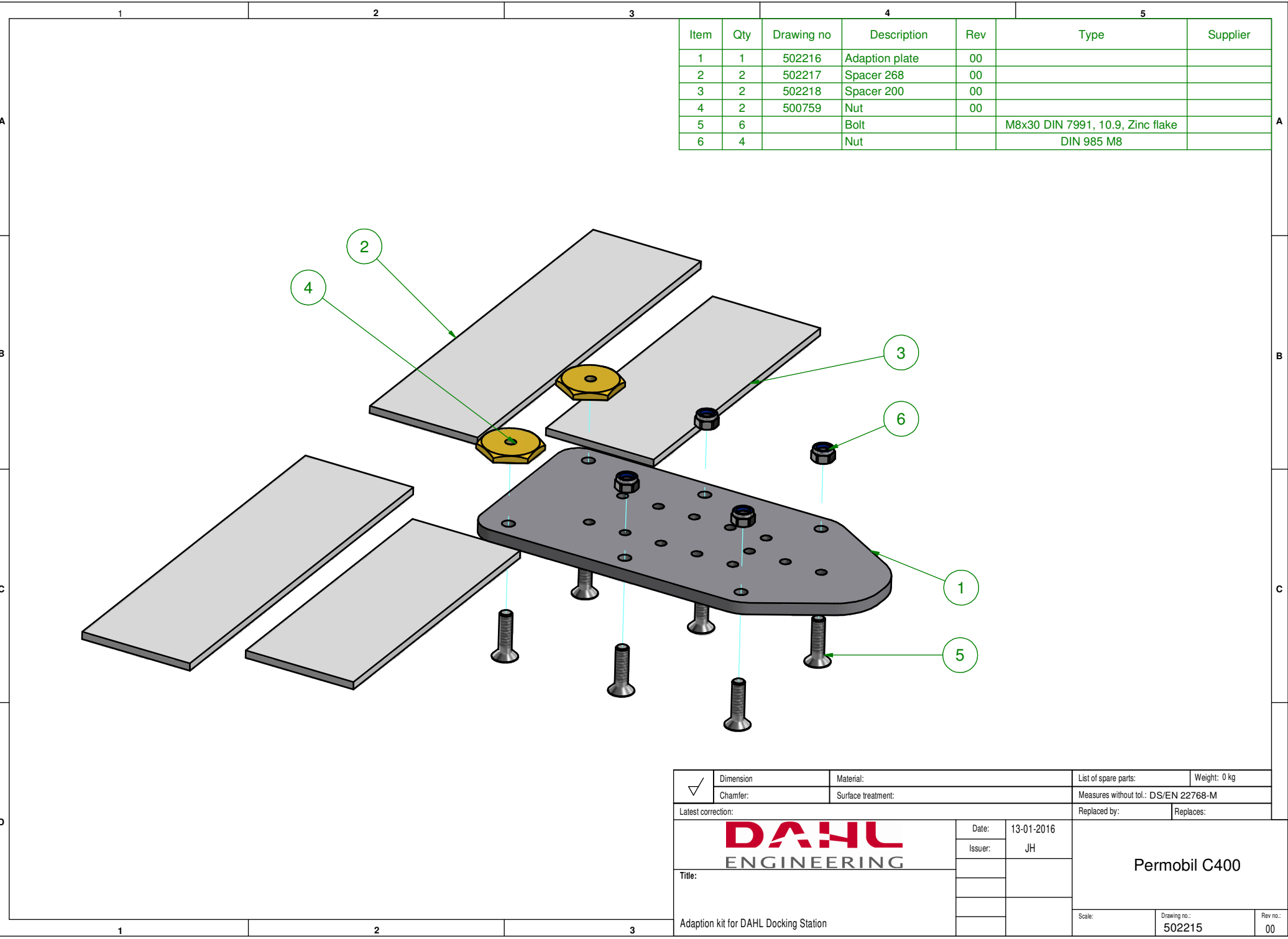


COPYRIGHT © THIS DRAWING REMAINS THE PROPERTY OF DAHL ENGINEERING. Copying, submitting to third parties or use for any purpose other than that originally intended is prohibited without previous written consent of DAHL ENGINEERING.



Item	Qty	Drawing no	Description	Rev	Type	Supplier
1	1	502216	Adaption plate	00		
2	2	502217	Spacer 268	00		
3	2	502218	Spacer 200	00		
4	2	500759	Nut	00		
5	6		Bolt		M8x30 DIN 7991, 10.9, Zinc flake	
6	4		Nut		DIN 985 M8	

<input checked="" type="checkbox"/>	Dimension	Material:	List of spare parts:	Weight: 0 kg
	Chamfer:	Surface treatment:	Measures without tol.: DS/EN 22768-M	
Latest correction:			Replaced by:	Replaces:
		Date:	13-01-2016	
		Issuer:	JH	
Title:		<b>Permobil C400</b>		
Adaption kit for DAHL Docking Station				
		Scale:	Drawing no.:	Rev no.:
			502215	00